

Traumatická zástava oběhu a něco k tomu....



Tomáš Henlín



ÚVN

Proboha proč tenhle.....



Traumatic cardiac arrest: should advanced life support be initiated?

[Leis CC](#)¹, [Hernández CC](#), [Blanco MJ](#), [Paterna PC](#), [Hernández Rde E](#), [Torres EC](#).

Open Access



RESEARCH

Outcome and predictors for successful resuscitation in the emergency room of adult patients in traumatic cardiorespiratory arrest

J. Zwingmann^{1*}, R. Lefering², M. Feucht¹

¹ P. C. Strohm³ and T. Hammer¹



Přežití.... 0 - 56%

Lepší neurologický outcome oproti netraumatickým

Příčiny:

- Hypovolémie cca 50 %
- Hypoxie 13 %
- Tenzní pneumothorax 13 %
- Srdeční tamponáda 10 %

HYPOVOLEMIC SHOCK

Hypovolemic shock is an emergency condition in which severe blood and fluid loss make the heart unable to pump enough blood to the body. This type of shock can cause many organs to stop working.

The loss of body fluids can cause a decrease in blood volume.

What Causes Hypovolemic Shock ?

about 20% or more lost amount of blood in the body

- EXCESSIVE DIARRHEA
- EXCESSIVE SWEATING
- SEVERE BURNS
- PROTRACTED AND EXCESSIVE VOMITING

BLOOD LOSS CAN BE DUE TO:

- Bleeding from Cuts cuts or wounds
- Bleeding from Injuries blunt traumatic injuries due to accidents or seizure activity
- Internal bleeding from the gastrointestinal tract or ruptured ectopic pregnancy

What are the Symptoms ?

The greater and more rapid the blood loss, the more severe the symptoms of shock.

- ANXIETY
- BLUE LIPS & FINGER-NAILS
- CHEST PAINS
- RAPID HEART RATE
- SHALLOW BREATHING
- LOW URINE OUTPUT

www.heartsandgoals.org

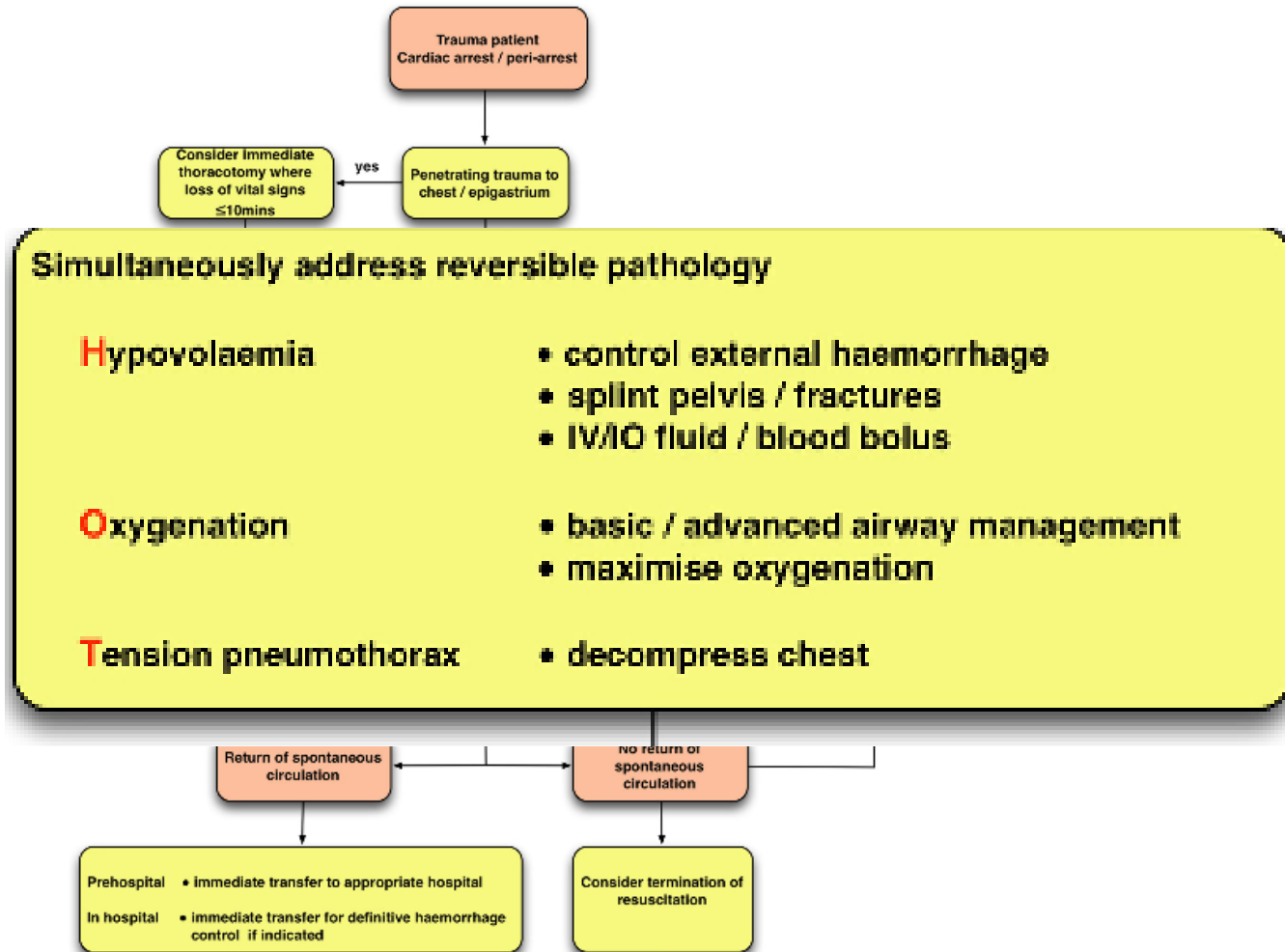






Traumatic cardiac arrest treatment algorithm

HOT...T





ELSEVIER

Contents lists available at [ScienceDirect](#)

Resuscitation

journal homepage: www.elsevier.com/locate/resuscitation



EUROPEAN
RESUSCITATION
COUNCIL

Review article

Impact brain apnoea – A forgotten cause of cardiovascular collapse in trauma



CrossMark

Mark H Wilson^{a,b,*}, John Hinds^c, Gareth Grier^a, Brian Burns^d, Simon Carley^e,
Gareth Davies^a



ELSEVIER

Contents lists available at [ScienceDirect](#)

Resuscitation

journal homepage: www.elsevier.com/locate/resuscitation



EUROPEAN
RESUSCITATION
COUNCIL

European Resuscitation Council Guidelines for Resuscitation 2015 Section 4. Cardiac arrest in special circumstances



Anatolij Truhlář^{a,b,*}, Charles D. Deakin^c, Jasmeet Soar^d, Gamal Eldin Abbas Khalifa^e, Annette Alfonzo^f, Joost J.L.M. Bierens^g, Guttorm Brattebø^h, Hermann Bruggerⁱ, Joel Dunning^j, Silvija Hunyadi-Antičević^k, Rudolph W. Koster^l, David J. Lockett^{m,w}, Carsten Lottⁿ, Peter Paal^{o,p}, Gavin D. Perkins^{q,r}, Claudio Sandroni^s, Karl-Christian Thies^t, David A. Zideman^u, Jerry P. Nolan^{v,w}, on behalf of the Cardiac arrest in special circumstances section Collaborators¹

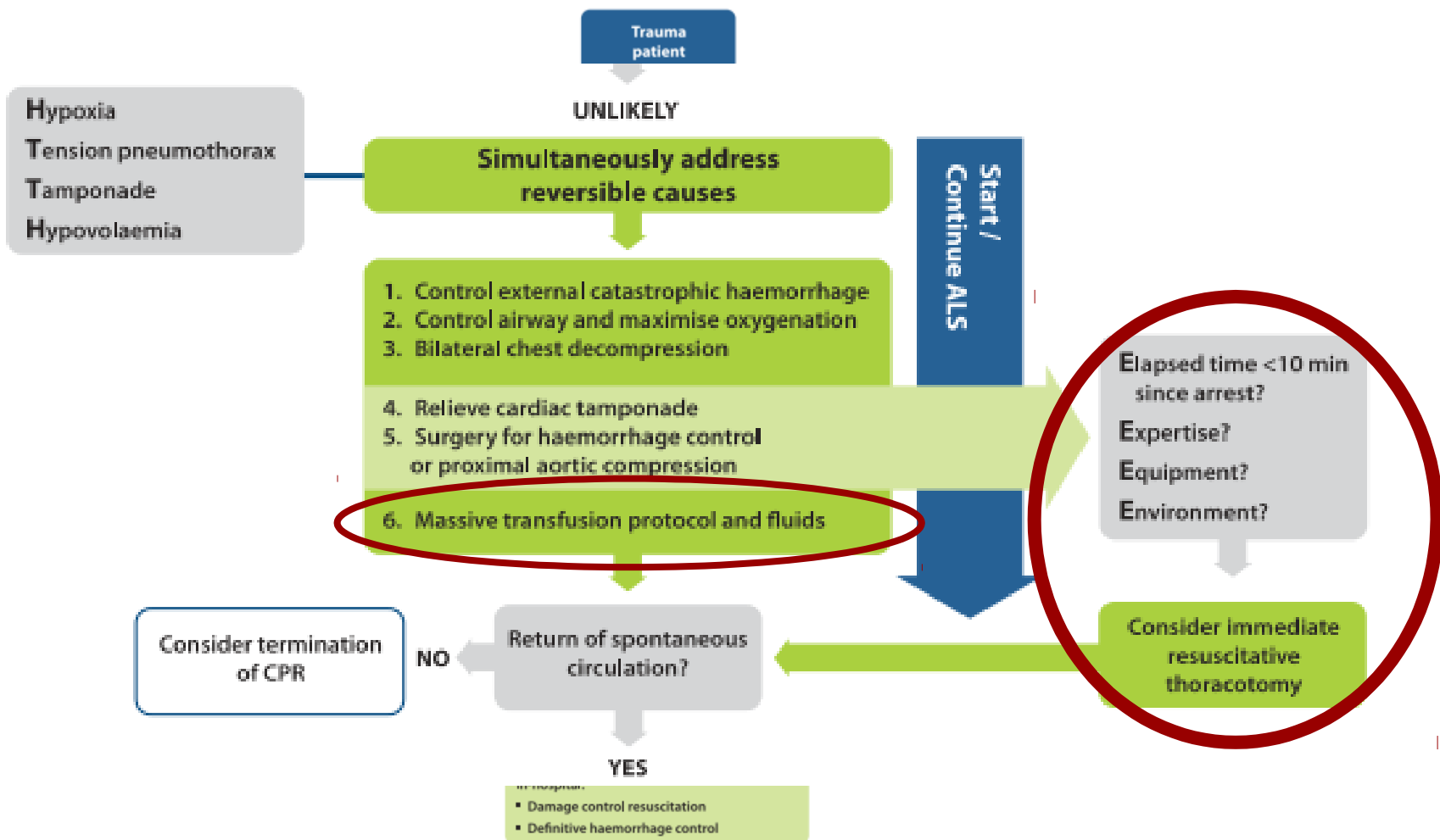
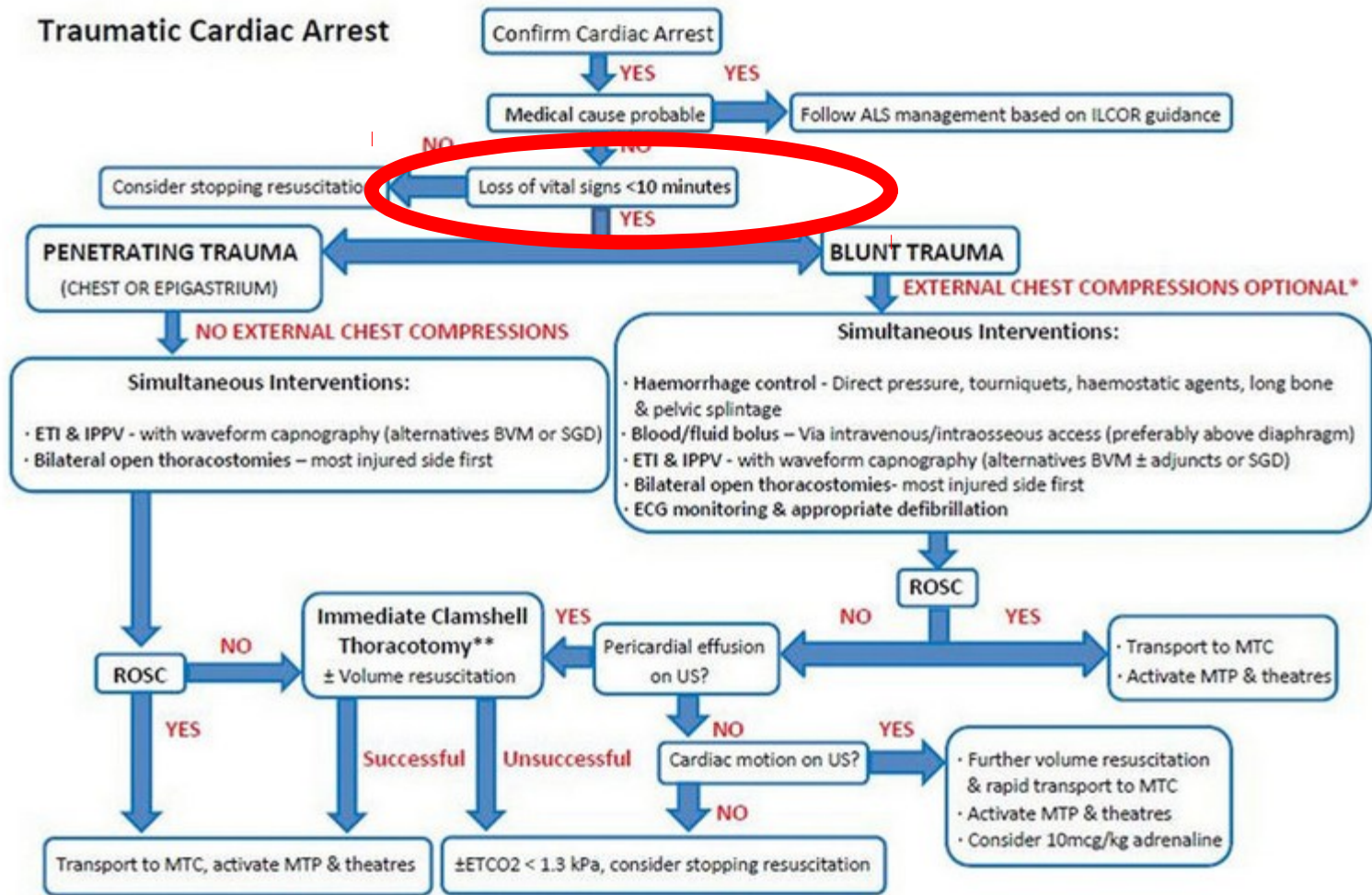


Fig. 4.3. Traumatic cardiac arrest algorithm.

Traumatic Cardiac Arrest

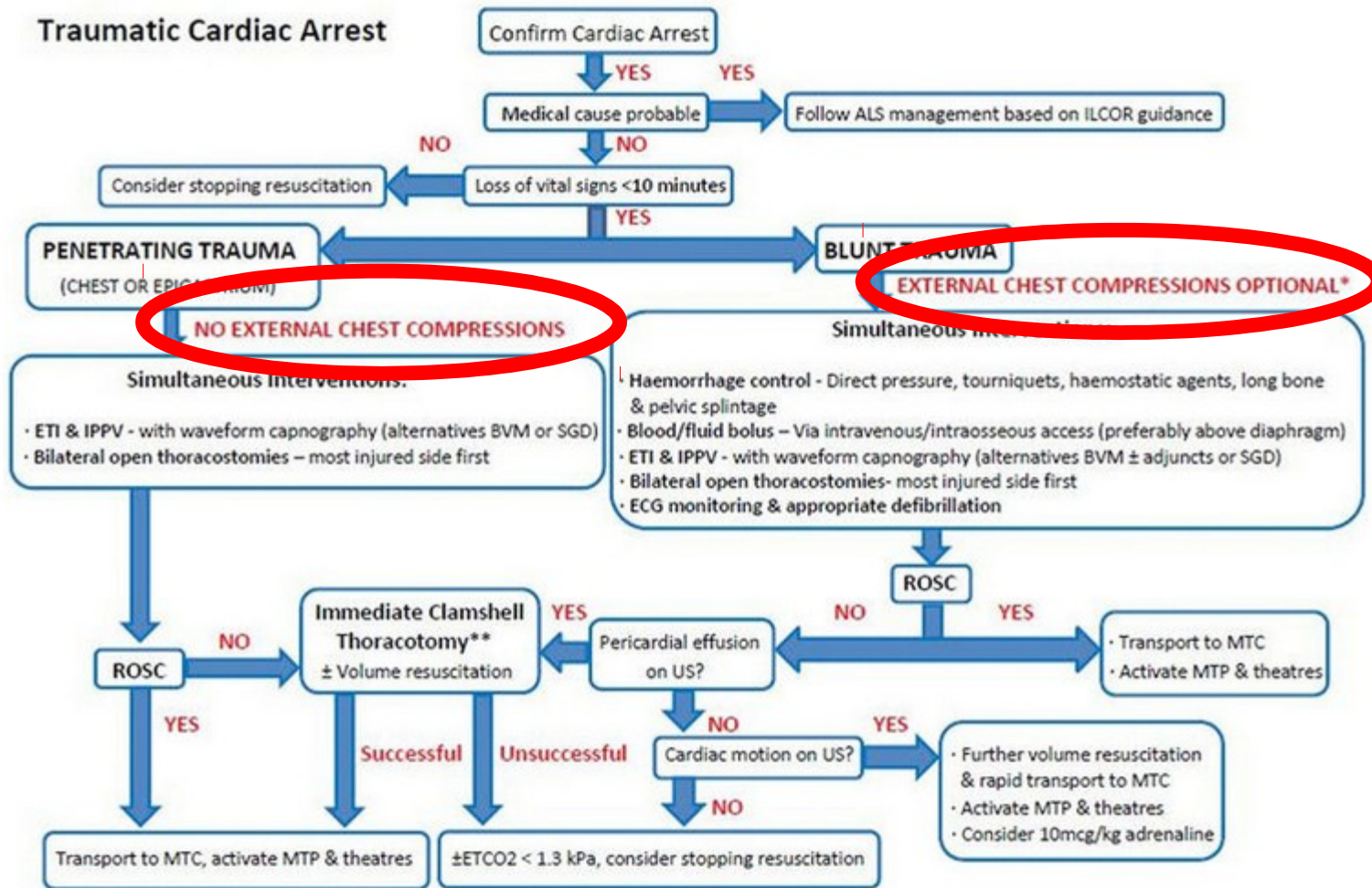




- Pohyby končetin
- Centrální puls
- Polykací reflex
- Fotoreakce

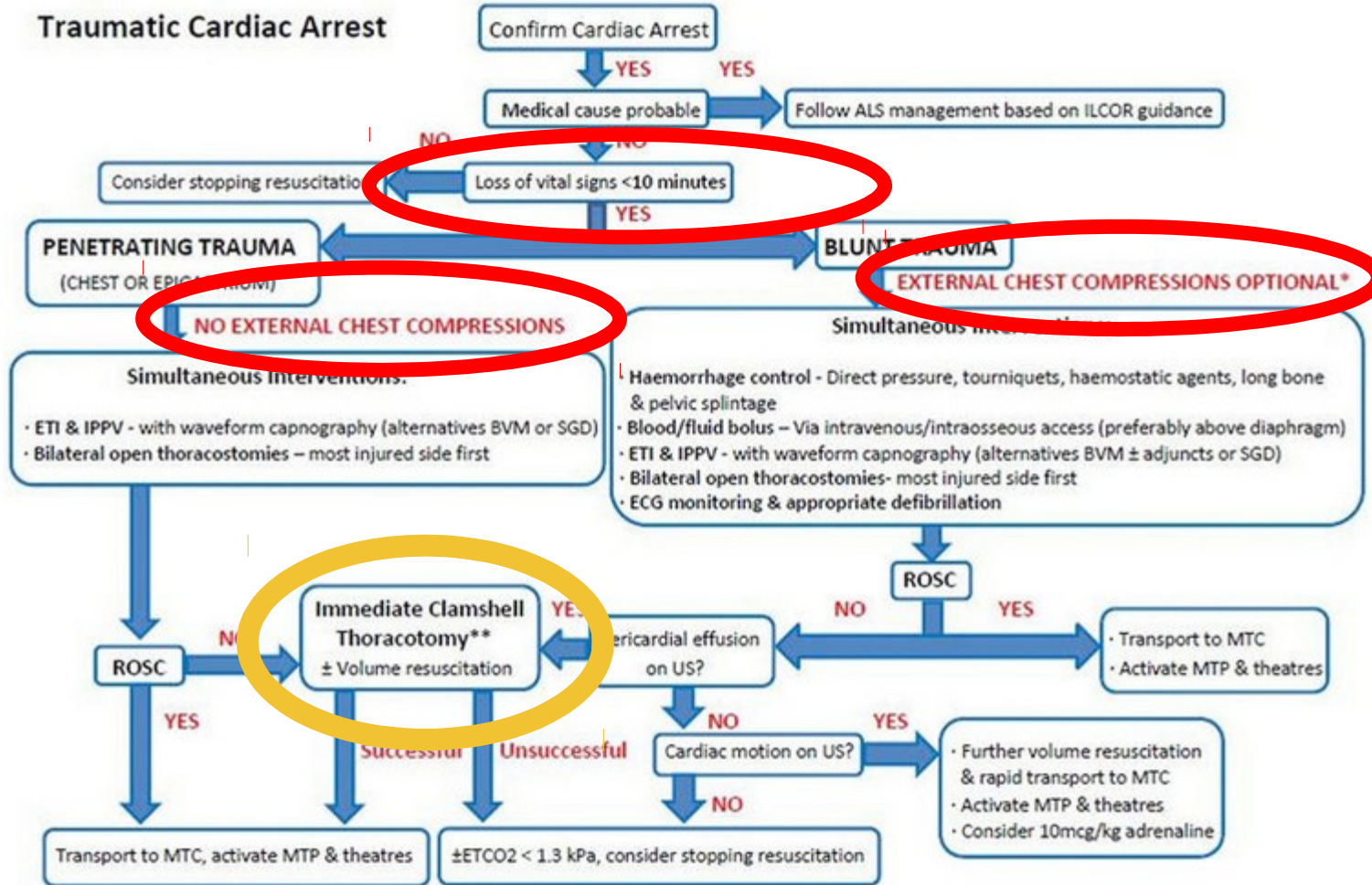
PEA !!!

Traumatic Cardiac Arrest





Traumatic Cardiac Arrest



kdy opravdu ANO

a

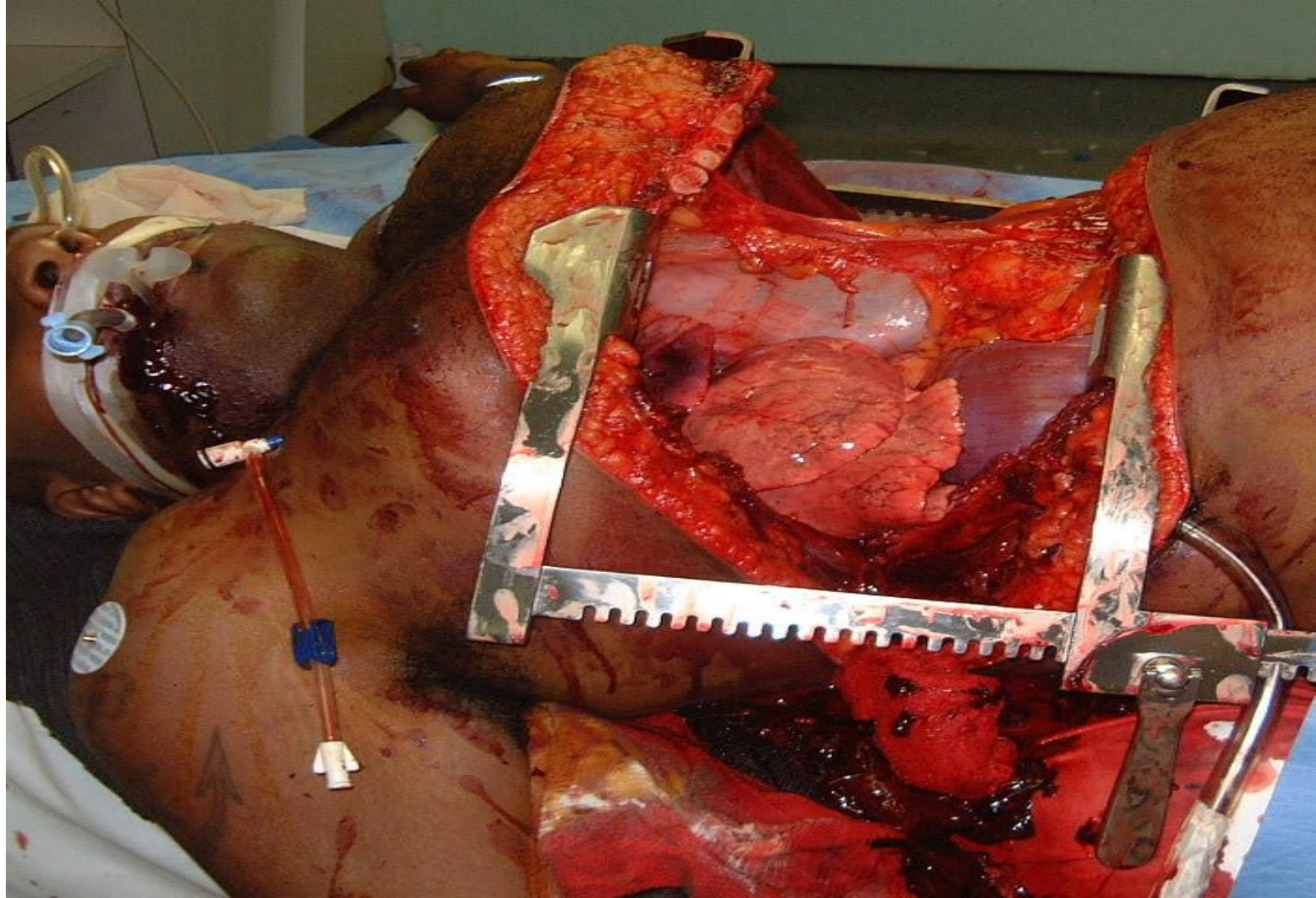
kdy opravdu NE...

Penetrující poranění

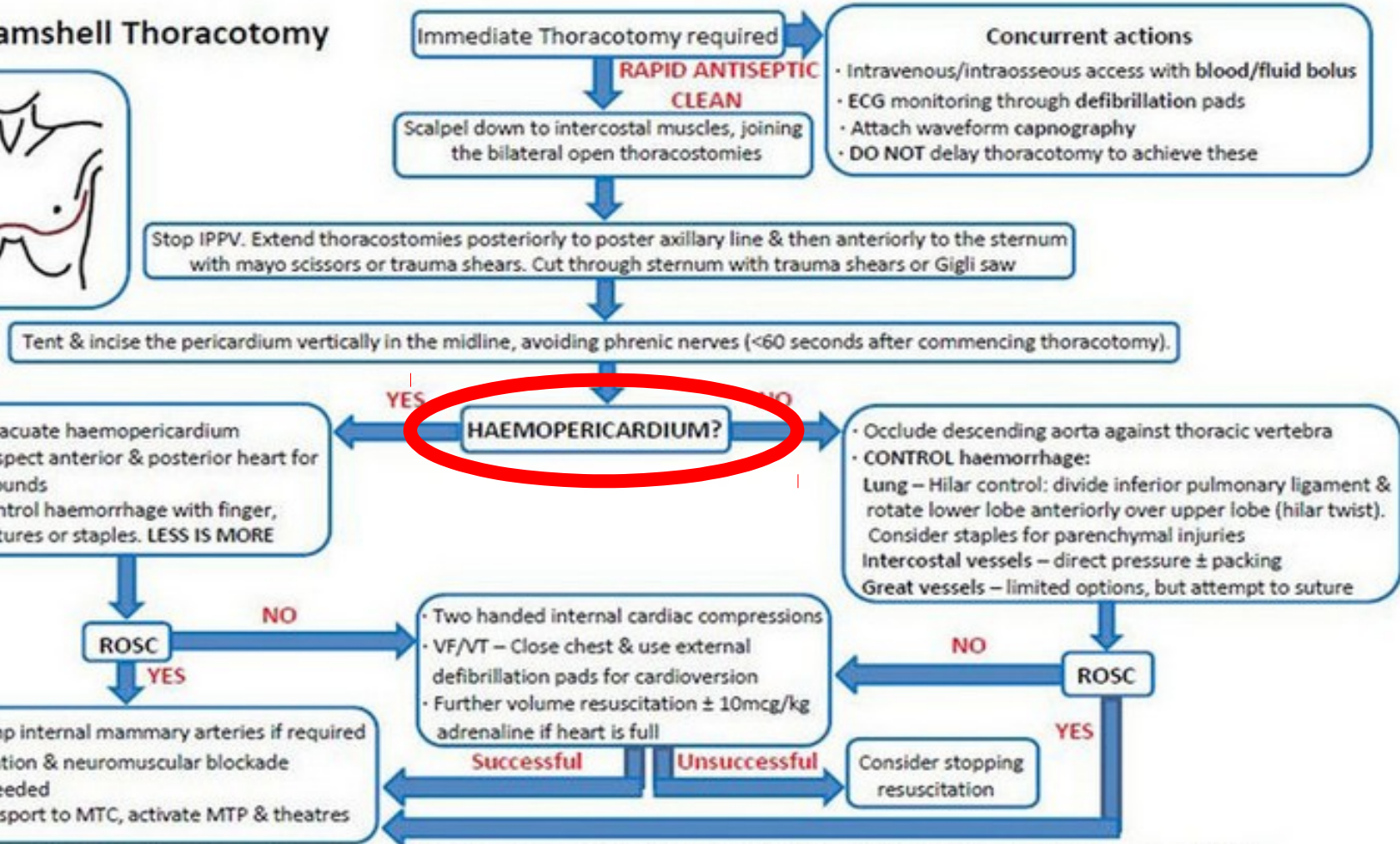
Známky života < 10 min

Bez známek života déle než 10 min





Clamshell Thoracotomy



Pro...

Co se stane když to udělám...

Může přežít

Proti....

Co se stane když to neudělám....

Může umřít

Nic, stejně umře....

Aspoň nic nechytanu...

Stejně to dělám jenom proto, abych si udělal díru do hrudníku...

TOP TEN TIPS

for resuscitative thoracotomy

BY THE SECRET CHEST CRACKER



Indications

PENETRATING: If signs of life
BLUNT: If they die in front of you.

TAMPONADE
HAEMORRHAGE
CPR

THANKS:
1. The secret chest cracker
2. Emcrit.org/podcasts/
procedure-of-thoracotomy



SLOW IS SMOOTH
SMOOTH IS FAST...

- 1. ALWAYS** do a clam shell
- 2. DON'T** let cardiothoracics take over unless they know what they're doing
- 3. BE** bold. Don't hesitate. Aim to enter the pericardium < 90 secs
- 4. KEEP** your kit simple: Scalpel. Forceps. Tuff cuts.
- 5. DO** two thoracotomies and join them in an underwired bra line, not straight across.

- 6. ALWAYS** open the pericardium - inverted T even if no tamponade
- 7. CLOSE** cardiac wounds with interrupted sutures.
- 8. PUT** on descending aortic compression early.
- 9. HAVE** blood ready to run.
- 10. AFTER** ROSC, control internal mammary artery bleeding with direct pressure.

Praktické rady.....aneb důležité otázky

1. *Můžu to opravit (existuje reverzibilní příčina) ?*
2. *Je srdce ještě naživu ?*
3. *Mám nějaký dobrý důvod ten hrudník neřezat ?*
4. *MÁM TO TEDA UDĚLAT ?*

Hinds

HAHAHAHAHA...

Crack the Chest; Get Crucified.

John D. Hinds, SMACC Berlin

